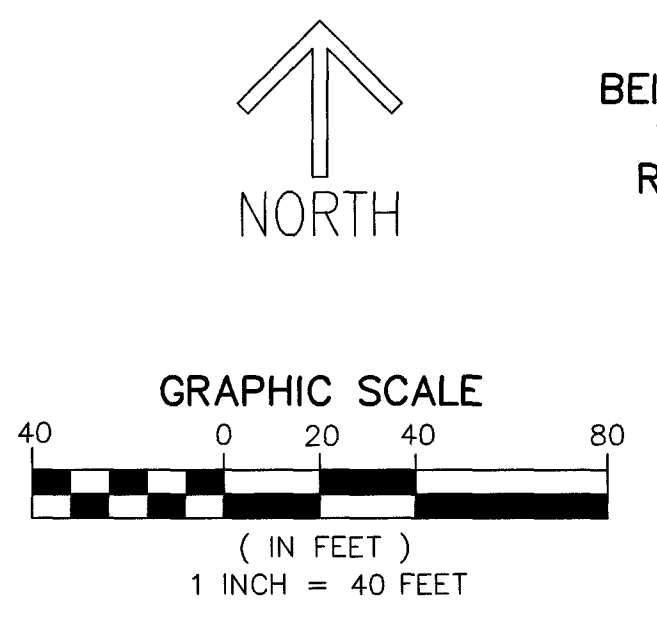
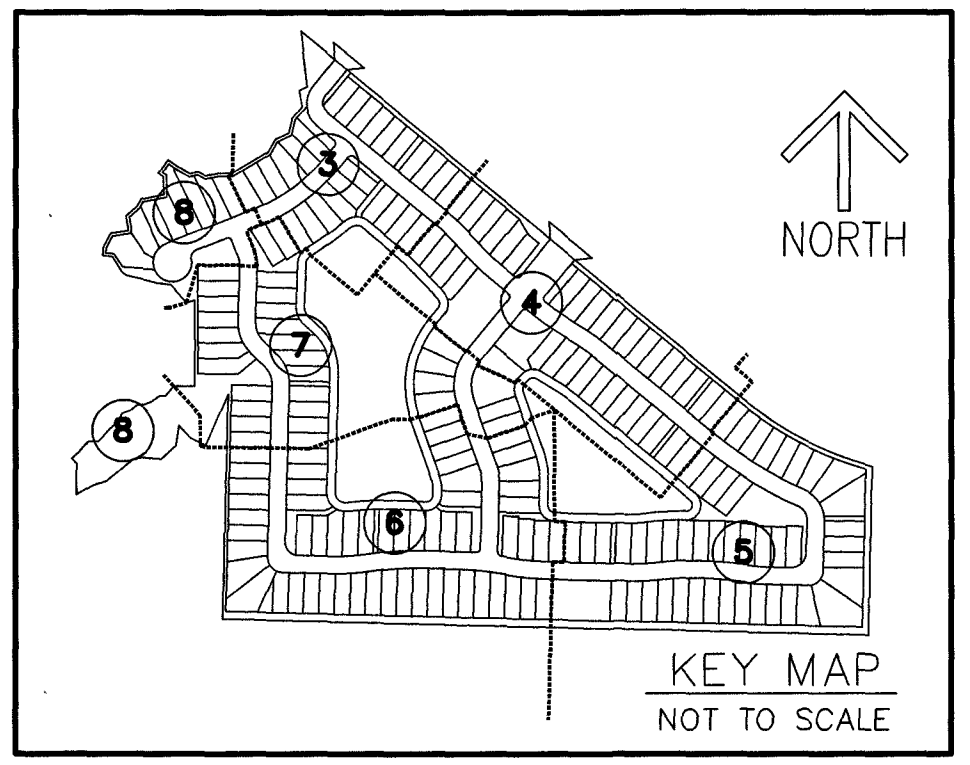


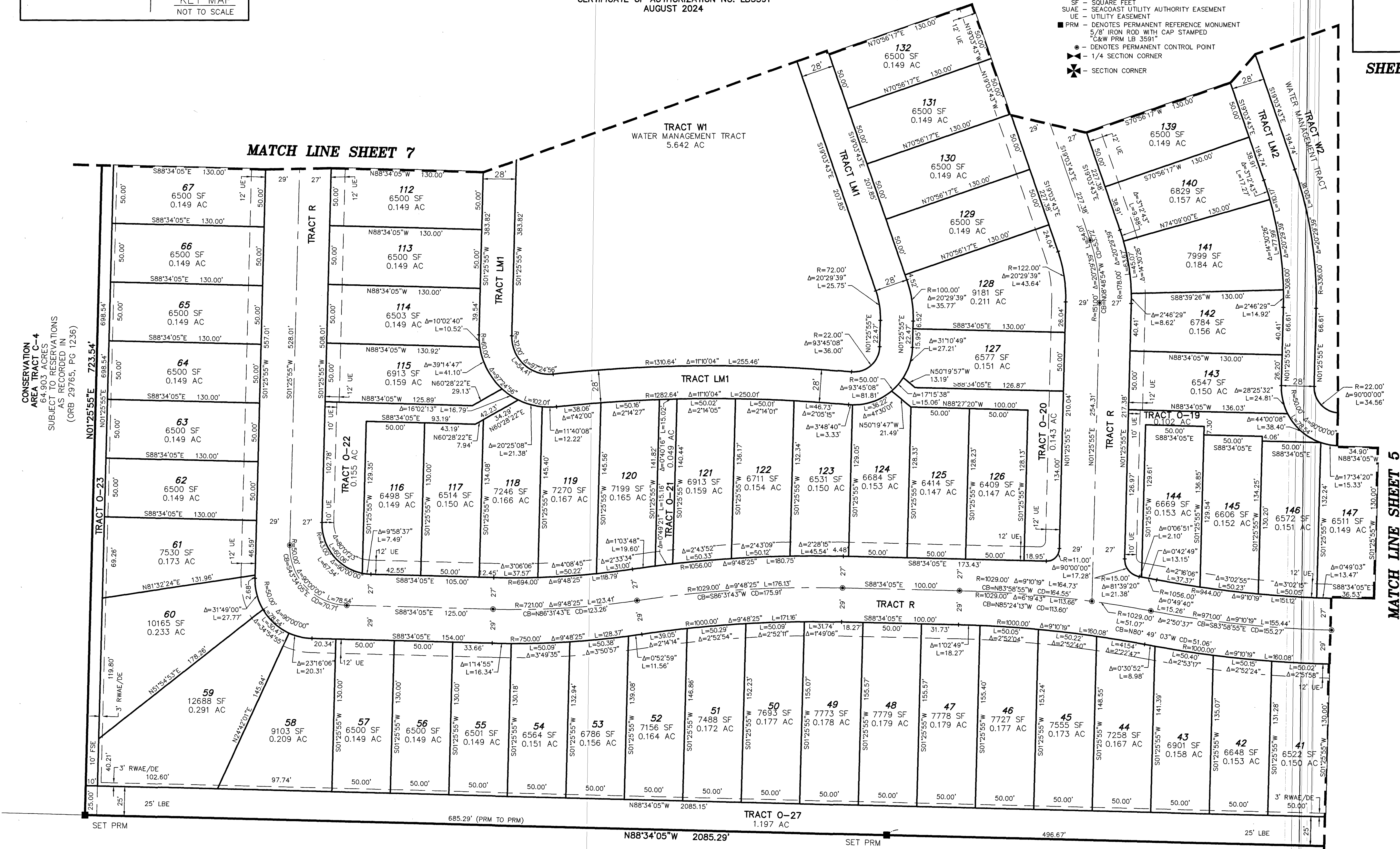
AVENIR - POD 21

BEING A REPLAT OF A PORTION OF PARCEL A-1, AVENIR, AS RECORDED IN PLAT BOOK 127 PAGE 85, TOGETHER WITH A PORTION OF TRACT RBE8, AVENIR - POD 15, AS RECORDED IN PLAT BOOK 134 PAGE 179, OF THE PUBLIC RECORDS OF PALM BEACH COUNTY, FLORIDA LYING IN SECTION 16, TOWNSHIP 42 SOUTH, RANGE 41 EAST, CITY OF PALM BEACH GARDENS, PALM BEACH COUNTY, FLORIDA.

THIS INSTRUMENT PREPARED BY
RONNIE L. FURNISS
OF
CAULFIELD and WHEELER, INC.
SURVEYORS - ENGINEERS - PLANNERS
7900 GLADES ROAD, SUITE 100
BOCA RATON, FLORIDA 33434 - (561)392-1991
CERTIFICATE OF AUTHORIZATION NO. LB3591
AUGUST 2024



- LEGEND/ABBREVIATIONS**
- CL - CENTERLINE
 - Δ - DELTA (CENTRAL ANGLE)
 - AC - ACRES
 - CB - CHORD BEARING
 - CD - CHORD DISTANCE
 - DE - DRAINAGE EASEMENT
 - FSE - FIRE SAFETY ACCESS EASEMENT
 - L - ARC LENGTH
 - LAE - LIMITED ACCESS EASEMENT
 - LB - LICENSED BUSINESS
 - LBE - LANDSCAPE BUFFER EASEMENT
 - LSE - LIFT STATION EASEMENT
 - O.R.B. - OFFICIAL RECORD BOOK
 - PG - PLAT BOOK
 - PAGE - PAGE
 - P.P.A.E. - PERPETUAL PUBLIC ACCESS EASEMENT
 - R - RADIUS
 - (R) - INDICATES RADIAL LINE
 - RB - INDICATES RADIAL BEARING
 - RBE - ROADWAY BUFFER EASEMENT
 - RWAE/DE - RETAINING WALL ACCESS AND DRAINAGE EASEMENT
 - SF - SQUARE FEET
 - SUA - SEACOAST UTILITY AUTHORITY EASEMENT
 - UE - UTILITY EASEMENT
 - - DENOTES PERMANENT REFERENCE MONUMENT
 - - DENOTES PERMANENT CONTROL POINT
 - ⊕ - 5/8" IRON ROD WITH CAP STAMPED C&W PRM LB 3591
 - ⊙ - 1/4 SECTION CORNER



CONSERVATION AREA TRACT C-4
64.903 ACRES
SUBJECT TO RESERVATIONS AS RECORDED IN (ORB 29765, PG 1236)

TRACT O-27 1.197 AC
TRACT R 1.197 AC
TRACT LM1 5.642 AC
TRACT LM2 5.642 AC
TRACT LM3 5.642 AC
TRACT LM4 5.642 AC
TRACT LM5 5.642 AC
TRACT W1 WATER MANAGEMENT TRACT 5.642 AC

UNPLATTED PORTION OF THE SE 1/4 OF SECTION 16